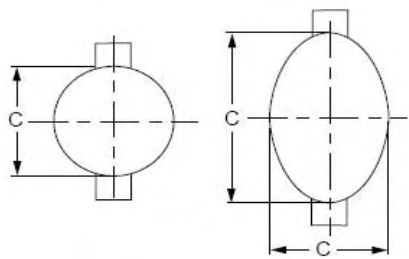
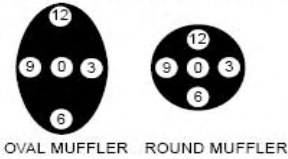


mufflers

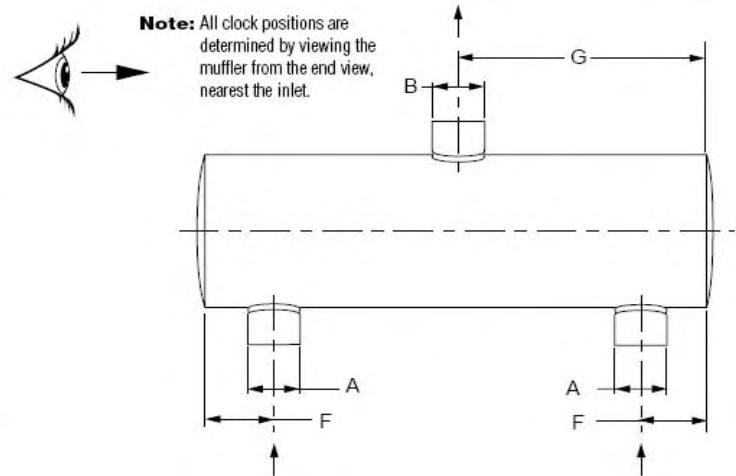
TYPE 15 DUAL SIDE IN SIDE OUT



INLET/OUTLET CLOCK POSITIONS



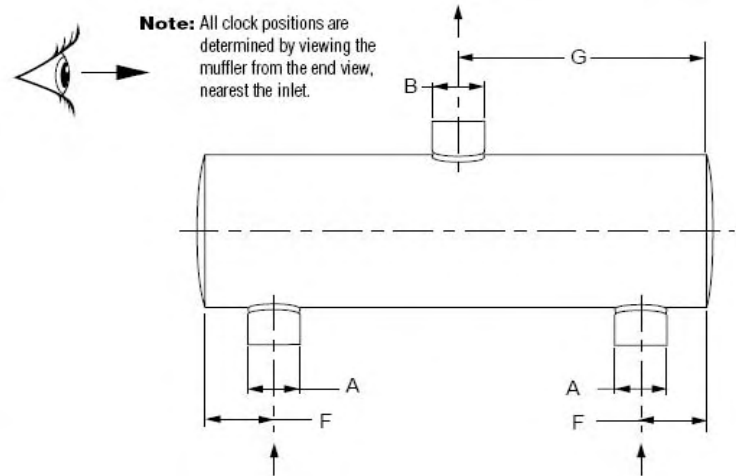
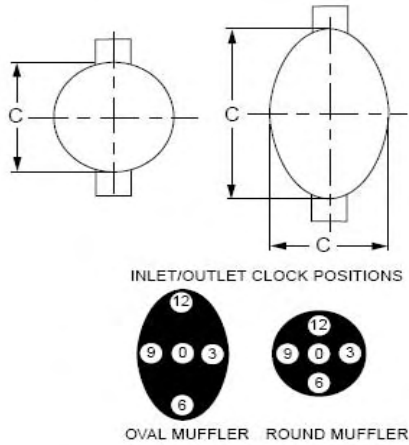
OVAL MUFFLER ROUND MUFFLER



PART# NUMBER	A INLET SIZE	B OUTLET SIZE	C BODY SIZE	D BODY LENGTH	E OVERALL LENGTH	F INLET OFFSET	G OUTLET OFFSET	H INLET LENGTH	INLET CLOCK POSITION	OUTLET CLOCK POSITION
D14-0837	1.125"ID	1.25"OD	4.5	15	17	2x1.625	1.25	2	12	9
D14-0613	1.25"ID	1.5"ID	3	20	20	2	10	2	6	12
D14-0856	1.25"ID	1.5"OD	4.5	8.5	10.5	6.75	0	1.75	8--10	0
D14-0954	1.25"OD	1.5"OD	5	15	15	1.68/1.68	7.5	5"	5	12
D14-0169	1.5"OD	2"TP	6	18	18	2	9	7.5	6	1
D14-0663	2"ID	3"ID	7	33	33	2.5	16.5	4	12	6
D14-0532	2.5"ID	3"OD	10	44	44	2.25	22	3.5	3	12
D14-0620	2.5"ID	3.5"ID	10x15	30	30	2.5	15	6	9	3
D14-0229	2.75"ID	3"OD	10	29	29	4.5	14.5	4	4--8	8--4
D14-0460	2.75"ID	3"OD	10	29	29	4.5	14.5	4	9	1:30--4:30
D14-0493	2.75"ID	3"OD	10	29	29	4.5	14.5	4	4--8	8--4
D14-0167	2.75"OD	3"OD	10	29	29	4.5	14.5	4	4--8	8--4
D14-0114	3"ID	5"OD	10	32	32	3.625	3.625	2	6	12:30
D14-0219	3"ID	5"OD	10	32	32	3.5	16	3	6	12
D14-0951	3"ID	4"OD	10	32	32	3.5/3.5	16	3	6	12
D14-0946	3"ID	5"OD	10	60	60	8.5/8.5	30	4--4	6	12
D14-0721	3"ID	5"OD	12	30	30	6.75	15	3	6	12
D14-0888	3"ID	4"OD	12	30	30	6.75	15	3	6	12
D14-0124	3"ID	4"ID	12	35	35	4.5	17.5	3	6	3
D14-0262	3"ID	5"OD	10x15	42	42	3.5	21	3.5	9	12
D13-1151	3"ID	4"OD	8.25X11.5	31	31	2.5	15.5	3.5	6	12
D14-0273	3"ID	2.5"ID	8.25X11.5	31.5	31.5	4	4	3	6	11&1
D14-0480	3"OD	3"OD	10	29	29	4.5	14.5	4	4--8	8--4
D14-0847	3.25"ID	4"OD	10	39	39	2.9375	7	2.5	6	2:30
D14-0708	3.3125"ID	4"OD	10	39	39	2.75	7	2.5	6	2
D14-0981	3.5"ID	5"OD	10	44	48	2.09/2.09	2	3--3	3--3	9:00
D14-0634	3.5"ID	4"ID	12	47.5	47.5	See	3.5	3	5	12
D14-0152	3.5"ID	4"ID	10x15	32	32	3	16	3	6	12
D14-0153	3.5"ID	4.4375"OD	10x15	32	32	16	0	2.5	9	6
D14-0254	3.5"ID	5"ID	10x15	36	36	3.75	18	3	9	3

mufflers

TYPE 15 DUAL SIDE IN SIDE OUT



Note: All clock positions are determined by viewing the muffler from the end view, nearest the inlet.

PART# NUMBER	A INLET SIZE	B OUTLET SIZE	C BODY SIZE	D BODY LENGTH	E OVERALL LENGTH	F INLET OFFSET	G OUTLET OFFSET	H INLET LENGTH	INLET CLOCK POSITION	OUTLET CLOCK POSITION
D14-0935	3.5"ID	4"OD	10x15	50	50	3--3	25	3--3	6--6	12
D14-0034	3.5"OD	3.5"OD	9	36	36	3	18	3	6	12
D14-0808	3.5"OD	4	9	36	36	2.75	18	2.5	6	12
D14-0764	3.625"ID	4.875"OD	10x15	35	35	3.125	17.5	3	9--9	3
D14-0605	4"ID	6"ID	16	47.5	47.5	3.25	16	3	6	12
D14-0863	4"ID	5"OD	10x15	34	34	3--3	17	3--3	9--9	3
D14-0995	4"ODF	4"ODF	9	44	46	0	26.875x2	2	0	12--6