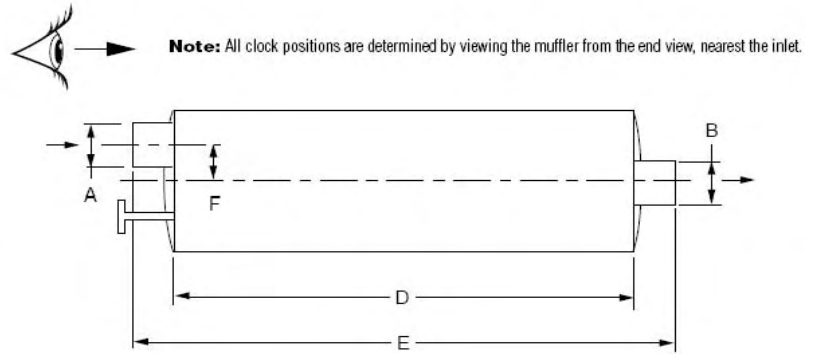
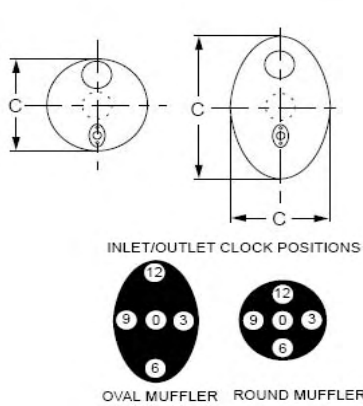


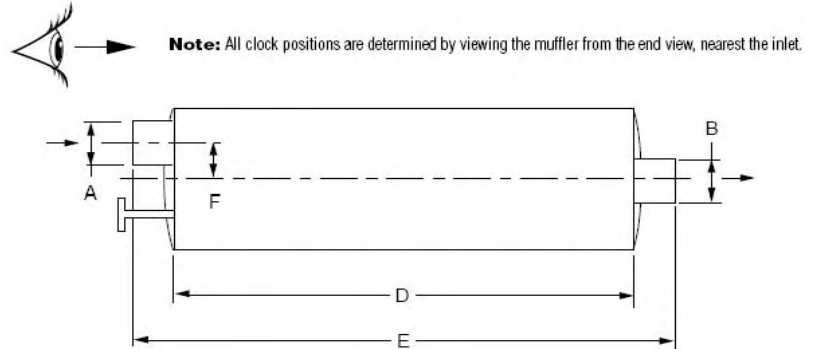
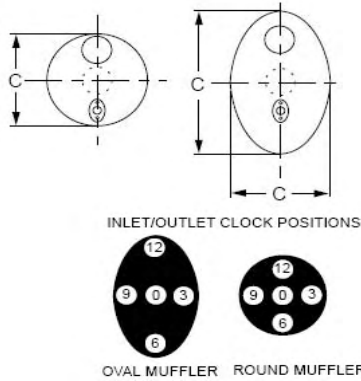
**TYPE 12**  
**END IN &**  
**ASPIRATOR**  
**END OUT**



PART# NUMBER	A INLET SIZE	B OUTLET SIZE	C BODY SIZE	D BODY LENGTH	E OVERALL LENGTH	F INLET OFFSET	G OUTLET OFFSET	H INLET LENGTH	INLET CLOCK POSITION	OUTLET CLOCK POSITION
D14-0882	3"ID	3"OD	6x10	26	40	3	3.5	4.25	12	6
D14-0017	3.5"ID	4"OD	8.25X11.5	26.5	50	2.5	2.5	5.5	6	12
D14-0415	3.5"ID	4.14"OD	8.25X11.5	26.5	34	2.5	2.5	3.5	12	6
D14-0247	3.5"ID	4"OD	8.25X11.5	27	52	2	3	4.75	6	12
D14-0282	3.75"ID	3.5"OD	4.5X11	29.5	40	0	0	2	0	0
D14-0215	3.75"IDFL	3"OD	4.5X11	28	39	0	0	3.5	0	0
D14-0285	3.75"IDFL	3"OD	4.5X11	29	38	0	0	3	0	0
D14-0075	3.93"ID	4.18"OD	8.25X11.5	19	27	2.5	2.5	3	12	6
D14-0108	4"FL	4"OD	8.25X11.5	26.5	41.5	0	0	6	0	0
D14-0879	4"ID	4"ID	8	57	65.5	0	0	5.5	0	0
D14-0013	4"ID	5"OD	10x15	24	34.5	4.5	4	3.5	12	6
D14-0027	4"ID	5"ID	10x15	27.5	34.5	4.5	4	3.5	6	12
D14-0016	4"ID	4"OD	6x10	17	25	2.5	2.5	3.5	6	12
D14-0861	4"ID	4"OD	6x10	18.5	24.5	see	see	2.5	6	12
D14-0224	4"ID	4"OD	8.25X11.5	18	42	2.5	2.5	4.5	12	6
D13-0041	4"ID	4"ID	8.25X11.5	26.5	34	2.25	2.25	3.5	6	12
D14-0084	4"ID	5.125"OD	8.25X11.5	26.5	35	2.625	2.625	4	12	6
D14-0158	4"ID	5"OD	8.25X11.5	26.5	33	2.5	2	3.5	6	12
D14-0249	4"ID	4"OD	8.25X11.5	26.5	50.5	3	3	9	6	12
D14-0266	4"ID	4"ID	8.25X11.5	26.5	34	2.5	2.5	3.5	6	12
D14-0692	4"ID	4"OD	8.25X11.5	26.5	37	2.5	2.5	4.5	6	12
D14-0732	4"ID	5"OD	8.25X11.5	26.5	54.5	2.75	2.25	11	6	12
D14-0242	4"ID	4"OD	8.25X11.5	40	53	2.5	2.5	4	6	12
D14-0026	4"OD	4"ID	6x10	19	28	2.5	2.5	4	12	6
D14-0255	4.5"FL	5"ID	8.25X11.5	38	46	0	0	4	0	0
D14-0059	4.5"ID	4.5"OD	8.25X11.5	18	26	0	0	4	0	0
D14-0101	4.75"ID	5"OD	8.25X11.5	26.5	54	2.5	2.5	8.5	6	12
D14-0478	5"FL	5"ID	8.25X11.5	26.5	41.5	0	0	6	0	0
D14-0239	5"FL	5"OD	8.25X11.5	35	44	0	0	5.5	0	0
D14-0843	5"FL-TURBO	5.125"OD	10x15	18	23.75	4.125	4.125	3	6	12
D14-0875	5"ID	5"OD	10x15	17	27	4	4	3	12	6

# mufflers

## TYPE 12 END IN & ASPIRATOR END OUT



PART# NUMBER	A INLET SIZE	B OUTLET SIZE	C BODY SIZE	D BODY LENGTH	E OVERALL LENGTH	F INLET OFFSET	G OUTLET OFFSET	H INLET LENGTH	INLET CLOCK POSITION	OUTLET CLOCK POSITION
D14-0434	5"ID	6"OD	10x15	26	39	4	3.5	3.5	6	12
D14-0800	5"ID	5.125"OD	8.25X11.5	17	28	2.5	3	3.75	12	12
D14-0023	5"ID	5.125"OD	8.25X11.5	25	34	2.5	2.5	3.5	12	6
D14-0803	5"ID	5"ID	8.25X11.5	26	33	2.75	2.75	3	6	12
D14-0055	5"ID	5"ID	8.25X11.5	26.5	34.5	2.5	2.5	3.5	12	6
D14-0836	5"ID	5.12"OD	8.25X11.5	26.5	37	2.5	3	3.75	12	12
D14-0994	5"ID	4"OD	8.25X11.5	27	49	2.25	2	11	6	12
D14-0853	5.25"ID	5.125"OD	10x15	26.5	50.5	3.75	3.75	12.25	6	12
D14-0196	6"OD	5.125"OD	10x15	26.5	51	3.75	3.75	20	6	12
D14-0082	6.125"ID	6"OD	10x15	24	35.5	3.375	3.375	3.5	12	6
D14-0727	6.125"ID	6.1875"ID	10x15	27	39	3.5	3.5	6	12	6
D14-0006	6.5"ID	6"OD	10x15	25.75	36	3	3	4.5	6	12
D14-0182	6.5"ID	6"OD	10x15	32	46	4	4	3	6	12
D14-0217	6.625"ID	6"OD	10x15	23	46	1.375	1.375	3	12	12
D14-0057	6.625"ID	6.75"OD	10x15	32	43	3.5	3.5	3.5	6	12
D14-0086	6.625"ID	6"OD	10x15	32	45	3.5	4	3	6	12
D14-0436	6.625"ID	6.75"OD	10x15	32	46	3.5	4	3	6	12
D14-0070	6.68"ID	6.68"ID	10x15	32	41.5	3	3	4	12	6
D14-0424	6.6875"ID	6.6875"ID	10x15	30	38	3.75	3.75	3.5	12	6